



## Building a sustainable future

Our mission is to support the construction industry with the most efficient, robust and sustainable foundation solutions. This is our story.





# Our story

We are building our company based on efficiency and sustainability.

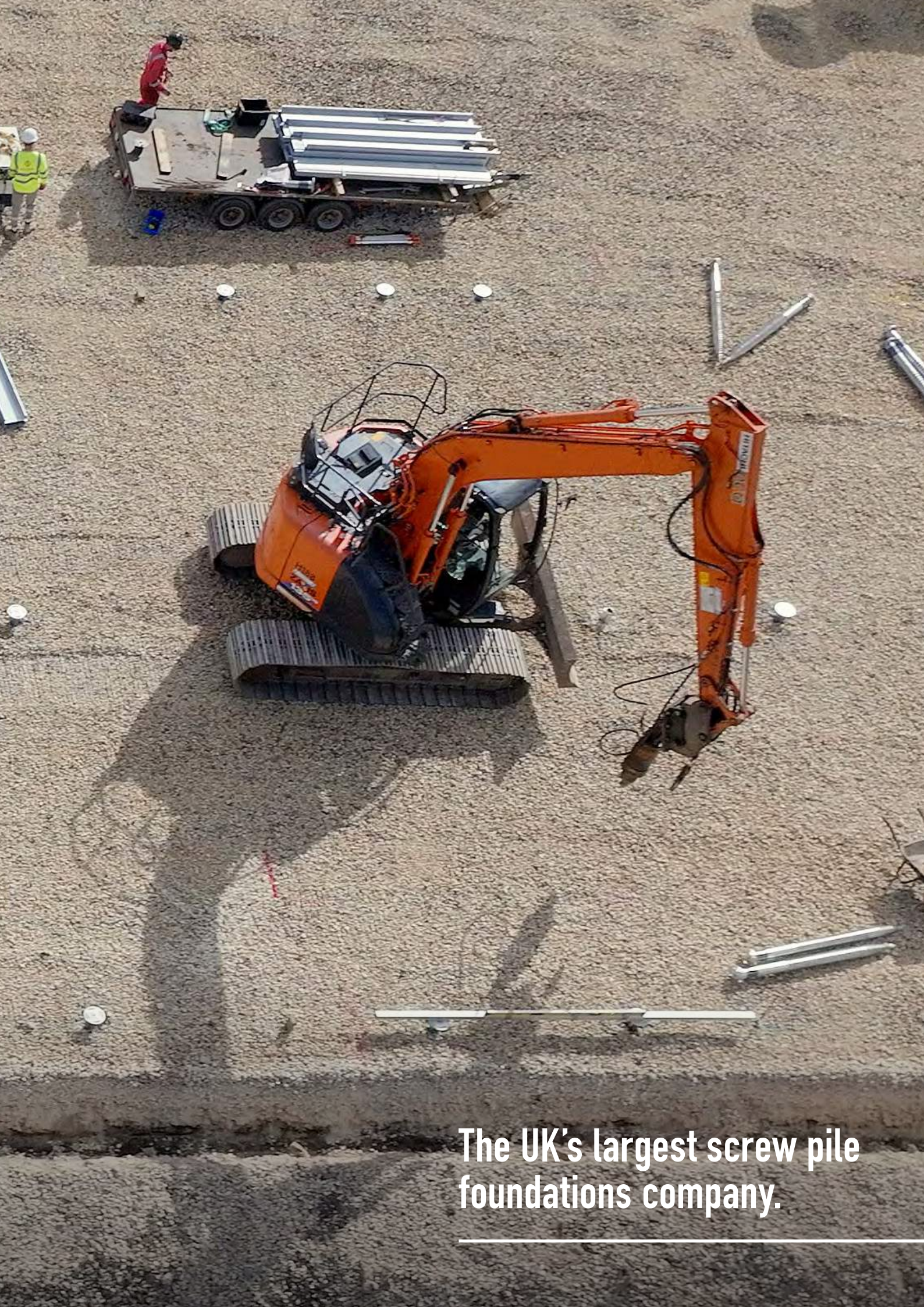
We founded our business on the belief that the future of construction must be efficient and sustainable and that low-carbon base systems should be the first choice.

By collaborating with partners and combining years of construction, engineering and manufacturing knowledge, we have developed our comprehensive range of industry-leading screw pile foundations, installation machines and testing equipment, backed with unparalleled technical support.

RADIX has grown significantly since its inception, with facilities and teams based and operating across the UK. Our work with partners and customers today is helping to build the net-zero future of tomorrow.

**Let's build a better future together, on the right foundations.**





**The UK's largest screw pile  
foundations company.**

---



# Our purpose

To make a positive environmental impact by supporting the construction industry with efficient, robust, low-carbon foundation solutions.



## Our values

They drive us every day to challenge the foundations of construction.

### Service

Listening to our customer's needs and putting them at the heart of everything we do.

### Value

Offering efficient and high-quality solutions that deliver positive outcomes for our customers.

### Sustainability

Protecting the environment for future generations offering a low-carbon alternative to concrete foundations.

### Partnership

Through great communication and building strong relationships we work together as one team.

**Our mission is to support customers with efficient and sustainable foundations that protect our environment for future generations.**

# Our journey so far

From national demand to a global brand.

## 2019

Established RADIX Base Systems Ltd to serve the need for a sustainable foundation solution.

## 2021

Expanded our residential installation division with a new partnership in the South East of England.

Moved into new office space, increased warehouse capacities to meet demand, and started to supply customers in Europe and Scandinavia.

Our residential installation division is recognised as the UK's most trusted ground screw installer.

## 2022

Developed new screw pile installation machines and testing equipment to meet market demand.

Introduced the helical screw pile extension to achieve greater load capacities at all depths.

RADIX Screw Piles tested and installed for a 1½ storey eco-house.

Expanded our residential installation division with additional partners across the UK.

Introduced two solar racking systems, deployed and assembled rapidly on RADIX Screw Piles.

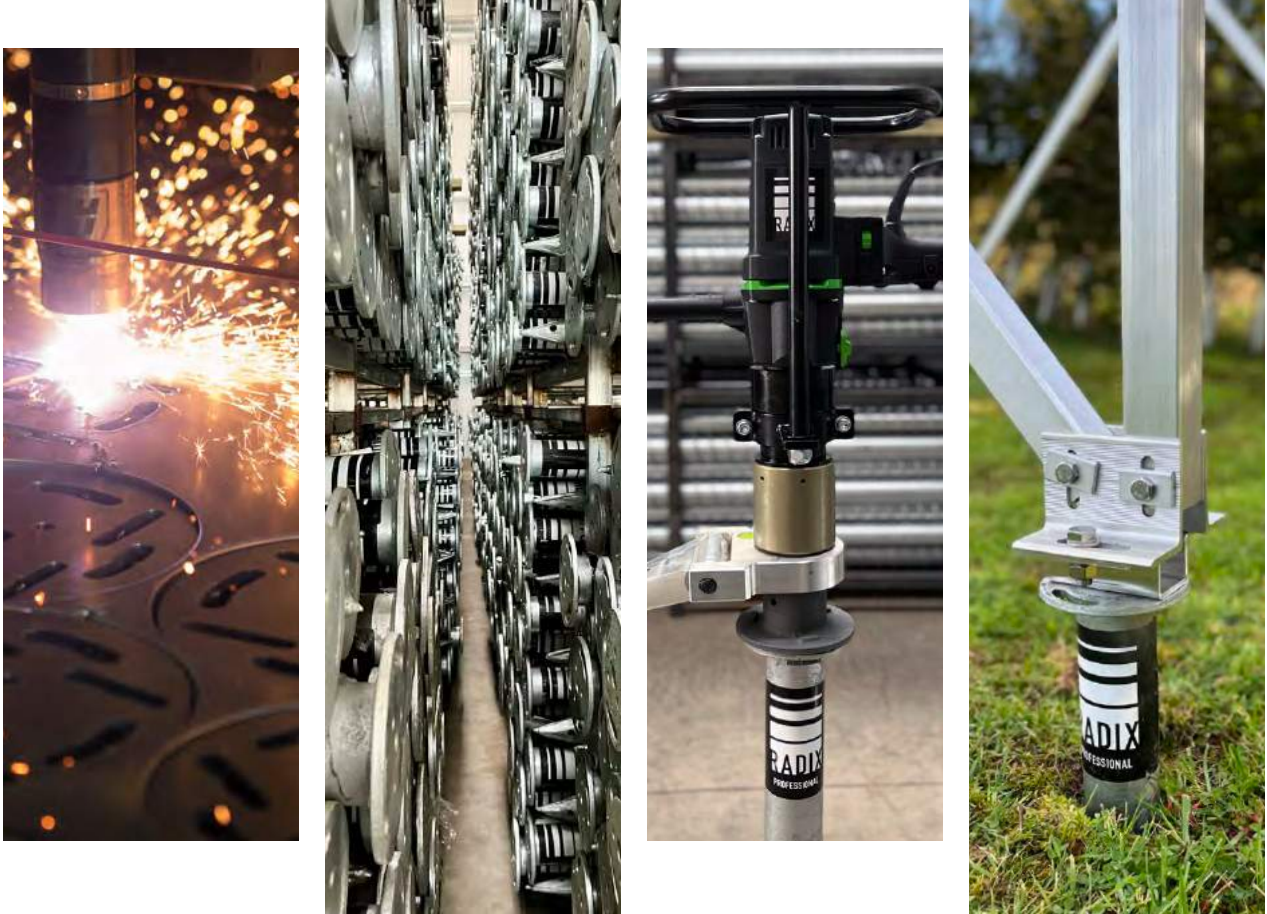
## 2023

Established RADIX Screw Piling Ltd to serve the increased demand for specialist foundation solutions in commercial and renewable energy sectors.

Expanded our storage capacities with an additional 12,500 sq ft UK-based warehousing and holding in excess of 20,000 ground screws and screw piles for rapid dispatch.

Opened our showroom for demonstrations and training, and to continue educating on the benefits and capabilities of screw pile foundations.

## A net-zero future



## Smart and sustainable by design

We are creating efficient and sustainable foundation solutions that don't cost the Earth.

We stand firmly by the quality of our products, formed through a rigorous in-house design process.

During our concept phase, we define the scope of all features and technical requirements, followed by a detailed quality assurance plan.

We work with partners to manufacture every screw pile and base system in accordance with EN ISO 9001:2015 for quality management and EN ISO 1461:2009 finishing.

We achieve innovation through continual research and development, using lessons learnt during testing, independent engineer reviews and ongoing customer feedback to identify potential improvements and adapt accordingly.

Our approach has delivered our range of industry-leading screw pile foundations, testing equipment, installation machines and solar racking systems.

**We apply the same approach to all the bespoke solutions we create.**





# 6-10%

Concrete is the most widely used construction material in the world, responsible for 6-10% of global carbon dioxide (CO<sub>2</sub>) emissions.<sup>1</sup>

# 2.8bn tonnes

The volume of carbon dioxide (CO<sub>2</sub>) produced every year by the cement industry.<sup>2</sup>

# <50%

RADIX Screw Piles contain less than half of the embodied carbon than an equivalent concrete base.<sup>3</sup>



1. <https://materialspalette.org/concrete/>
2. <https://2ea.co.uk/concretes-colossal-carbon-emissions/>
3. <https://radixgroup.co.uk/support/>





**Screw pile foundations and  
bespoke subframe solutions.**

---



# Specialist screw pile foundations

Designing, manufacturing and installing bespoke structural foundation solutions across key sectors and reducing programme lengths by up to 70%.

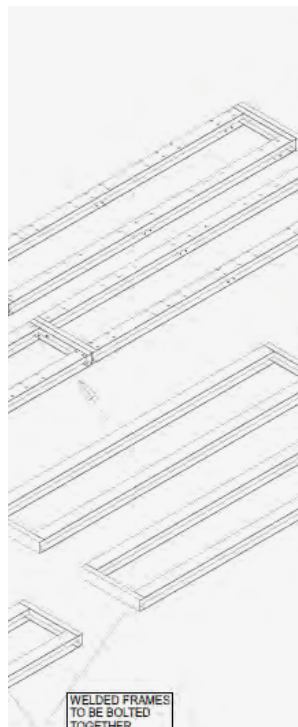
Collaborating with programme engineers, architects and project managers through our careful and practical design process, we work to understand all technical requirements to create bespoke structural foundation solutions across key sectors, including renewable energy, leisure and tourism, modular building, and infrastructure.

Our approach delivers on meeting technical specifications as well as ambitious programme requirements, devising robust structural bases that are modular in design and can be manufactured and installed rapidly on RADIX Screw Piles to meet or even reduce programme delivery schedules.

Once a solution is realised, designs are sent for manufacturing in BBA-certified fabrication workshops, galvanising to EN ISO 1461:2009 to increase durability before being installed on screw pile foundations, with each RADIX Screw Pile capable of supporting in excess of 75kN.

Combining our engineering and manufacturing background, carefully considered design process and expert installation capabilities, our screw pile foundations and bespoke structural base solutions cut programme delivery schedules by up to 70% compared to concrete.

$$\begin{aligned}
 \text{WEIGHT} &= 3500 \text{ kg PER } 1 \\
 &= 34.3 \text{ kN} \\
 \text{LOAD (BS EN 1991-1-3)} \\
 S &= \mu; C_e C_{sk} S_k = 0.24 \text{ kN/m} \\
 S_k &= 0.3 \\
 C_e &= 1.0 \\
 C_{sk} &= 1.0 \\
 \mu &= 0.8 \\
 \text{RD - (BS EN 1991-1-4)} \\
 \text{5 IN MANCHESTER. (SALFORD).} \\
 C_{dir} \times C_{season} \times V_{b0} &= 23.13 \\
 C_{dir} &= 1.0 \\
 C_{season} &= 1.0 \\
 V_{b0} = V_{b0up} \times C_{alt} &= 23.13 \text{ m/s} \\
 C_{alt} = 1 + \frac{A}{100} &= 1.028 \\
 A &= 28 \text{ m} \\
 V_{b0up} &= 22.5 \text{ m/s} \\
 &= 0.625 \times V_b^2 = 0.334 \text{ kN/m}^2 \\
 &= C_e(z) q_b = 0.6 \text{ kN/m}^2 \\
 C_e(z) &= 1.8^2 \quad (2.5 \text{m tuen, 11kN}) \\
 C_s C_d \times C_f \times q_p \times A_{ref} \\
 C_s C_d &= 1.0 \\
 A_{ref} &= 1.0
 \end{aligned}$$





# Positive impact across every sector

Combining our technical expertise and sustainable foundations, RADIX is supporting ambitious projects.





**Our screw pile foundations are supporting projects in the following sectors:**

- Agriculture
- Education
- Leisure and tourism
- Public sector
- Renewable energy
- Residential
- Transport and infrastructure





# We are RADIX

Because of our ambitious people, we can design our innovative products, support our clients, and work towards building a net-zero future.



**Callum Milne**  
Managing Director



**Christian Alexander**  
Operations Director



**Elizabeth Alexander**  
Finance Director



**Duncan Hermer**  
Commercial Manager



**Shane McGivern**  
Head of Business and Customer Relations



**Peter Laird**  
Customer Service Administrator



**Russell Thorpe**  
Operations Manager



**Nicola Martin**  
Project Estimator



**Roy Milne**  
Project Estimator



**Karen Matthew**  
Office Manager



**Alex Mitchell**  
Brand & Communications



Where 50+ people work to build  
a better future.

Meet more of our team at [radixgroup.co.uk/about](https://radixgroup.co.uk/about)



- Head Office
- Distribution
- Install Team




**RADIX North**  
Unit 1 Edison Place  
Dryburgh Industrial Estate  
Dundee, DD2 3QU



**RADIX South**  
Unit 6 Termitts Farm  
Termitts Chase  
Hatfield Peverel  
Essex, CM3 2AE



An aerial, top-down view of a dense forest of evergreen trees, likely spruce or fir. The canopy is thick and textured, with varying shades of green from deep forest green to bright, sunlit yellow-green. The perspective creates a sense of depth and immersion in the natural environment.

**Supporting the world  
without costing the Earth.**

---



# Sustainability

Our low-carbon foundations are making a positive impact on every project.

We can help protect our planet for future generations by making many small changes together. At RADIX, we also actively support organisations and projects that make a difference in protecting our environment, capturing carbon, revitalising important natural habitats and providing homes for wildlife.

## Trees for Life

We are a Silver Partner, helping plant native saplings around the Scottish Highlands to restore natural habitats.



We are a Bronze Partner, supporting planting Zostera Marina seagrass seeds around the UK's coasts.



Learn more about the positive impact we're making at [radixgroup.co.uk/sustainability](https://radixgroup.co.uk/sustainability)





## Supporting a net-zero future on the right foundations.

As the UK's largest stockist, supplier and installer of screw pile foundations, we are ready to support you.

- Industry-leading screw pile foundations
- Robust solar racking systems
- Installation machines and testing equipment
- Bespoke base system design and manufacturing
- Specialist screw pile testing and installation

**Learn about our efficient and low-carbon solutions and sustainability goals at [radixgroup.co.uk](https://radixgroup.co.uk)**

### Product Sales

Unit 1 Edison Place,  
Dryburgh Industrial Estate,  
Dundee, DD2 3QU

+44 (0)1382 819 458

[sales@radixgroup.co.uk](mailto:sales@radixgroup.co.uk)

### Testing & Installation

Unit 6, Termitts Farm,  
Termitts Chase, Hatfield Peverel,  
Essex, CM3 2AE

+44 (0)1245 676 070

[installations@radixgroup.co.uk](mailto:installations@radixgroup.co.uk)

### Connect with us

